



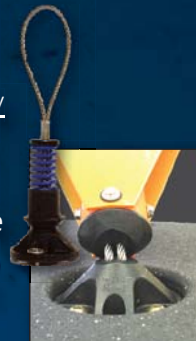
TUFF CURB® XLP™

Traffic Separation, Highways, City Streets, Bike Lanes, Toll Plazas, Bridges



Impact's Exclusive Reactive Spring Assembly

TUFF Curb® XLP™ lane separators are designed to accept posts and panels assembled with our patented anti-twist reactive spring assembly. The spring assemblies return the post/panel to its original position after impact to ensure product longevity and reduced replacement costs.



Xtreme Low Profile High Performance Traffic Separator

TUFF Curb® XLP™ is a durable, high performance curb, compatible with Impact Recovery Systems' full line of rebounding posts and panels, providing solutions for your traffic safety concerns.

Low profile dimensional properties, along with curved glass reflectors, provide maximum visibility and traffic separation both day & night.

XLP™ is ideal for high speed applications and in city streets. Applications such as HOV lanes, turn restrictions, bike lanes, tunnels or grated bridges where pavement markings alone may be insufficient.

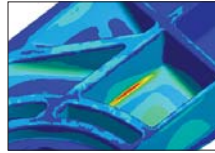
TRAN SAFE

ransportation safety Products

TUFF CURB® XLP™ | Xtreme Low Profile

Superior Strength

TUFF Curb® XLP™ is an extreme low profile, high performance curbing system designed to endure damaging high speed, high impact applications. XLP™ is made from solid colored, UV resistant, high density polyethylene (HDPE). Despite its light weight (6 lbs.), the unique XLP™ undercarriage rib design can bear 20,000 lbs of static pressure – double the federal single axle vehicle maximum for a single wheel. To further ensure durability, advanced computer Finite Element Analysis was also performed. XLP™ was tested, and is the only curbing on the market today that is accepted under the 2009 MASH standards.



Innovative Features

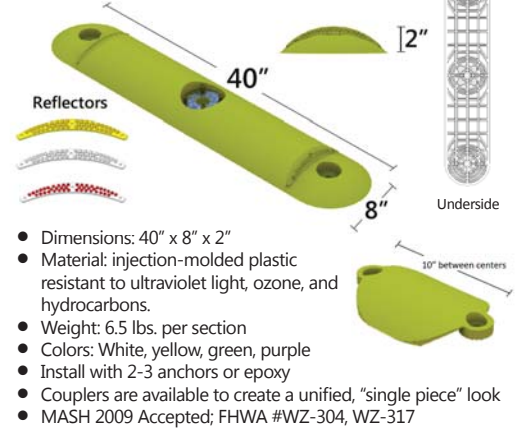
- Xtreme Low Profile/Lightweight Design
- Single piece design – end caps are not necessary
- No need for water scuppers that clog with debris – install curbing section 2-3" apart allowing unimpeded water flow.
- Superior Strength
- Curb Adjoining Coupler (optional)
- Arched Glass Element Reflectors
- Install along curves or tangent roadways via bolts or highway adhesive – further expanding application possibilities
- Compatible with IRS® full line of fixed or quick release posts and panels

Benefits

- Decreased Installation Time and Cost
- Product Longevity
- Industry Leading Visibility
- Numerous Application Possibilities
- Ease of Installation and Maintenance
- 5 Year Warranty
- Tested and Accepted to the highest highway standards available today.



Specifications



Which TUFF Curb® is right for you?

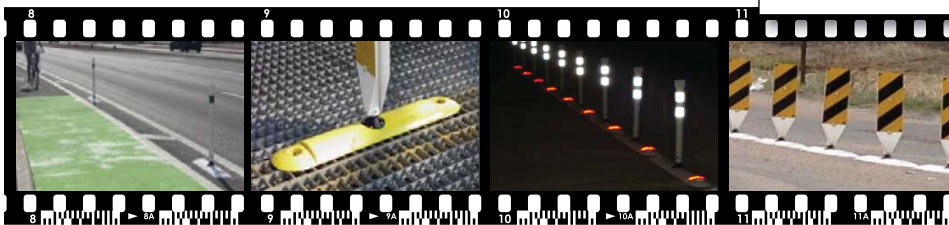
	TUFF Curb® XLP™ Xtreme Low Profile Curb 40" x 8" x 2"	TUFF Curb® Low Profile Curb 40" x 12" x 3.5"
At-Grade Crossings	●	★
Bike Lanes	★	—
Bridge Decks	★	—
Centerline Work Zone	★	●
Entrance/Exit Ramps	★	●
HOV Lanes	★	●
Parking Decks	★	—
Toll Booths (slow speeds)	●	★
Toll Lanes/Plaza Channelization (high speeds)	★	●
Turn Lanes	●	★
Urban Turn Restrictions	●	★

★ Preferred ● Suitable — Not Recommended

Please refer to IRS Installation Instructions for proper installation procedures available online.

Increased Visibility

Traditional reflectors only offer reflection from a straight-on light source. XLP's reflectors far surpass the mandated 20° reflectivity levels required by the ASTM D4280 standard and offer reflection over 45° in each direction. They are also curved to highlight the profile of the curb and are highly resistant to breaking, scratching, chemicals, and loss of reflectivity.



Call for more information:
Transafe, Inc
1625 Spectrum Drive, Suite 100
Lawrenceville, GA 30043
800-969-5103